

Schneider Electric

XML to XLS Program

January 2019

Overview

This Excel program displays in a spreadsheet format a SAGE RTU point configuration of slave port(s).

Description

For each slave port protocol configured in the RTU, a unique sheet displays the points for each type of data, for example DI, AI, SBO etc., along with other data point information. Also, for each DNPR port that is configured, the port configuration is displayed on its own sheet.

The following sheets are created:

“Info” sheet

Port Summary Sheet

Individual Port Data sheet(s) (Baud Rate, IED Address, etc)

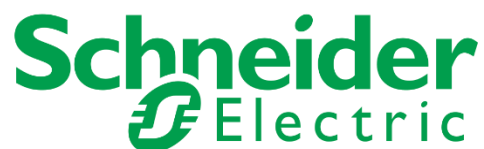
Port Config sheet(s) (DNPR, Enhanced ModbusR, DNPM IED's, only) for Mapping and points

Application Config sheet(s): Boolean Status

The “Info” sheet contains messages about the program and the level of information. There are three types of levels, **Info**, **Warning**, and **Fatal**. The program will run with the first two levels but if a Fatal error occurs, the problem must be corrected before the program can run successfully.

The Port Data sheets contain the point information for each data type configured.

The Port Config sheet contains the port communication parameters.



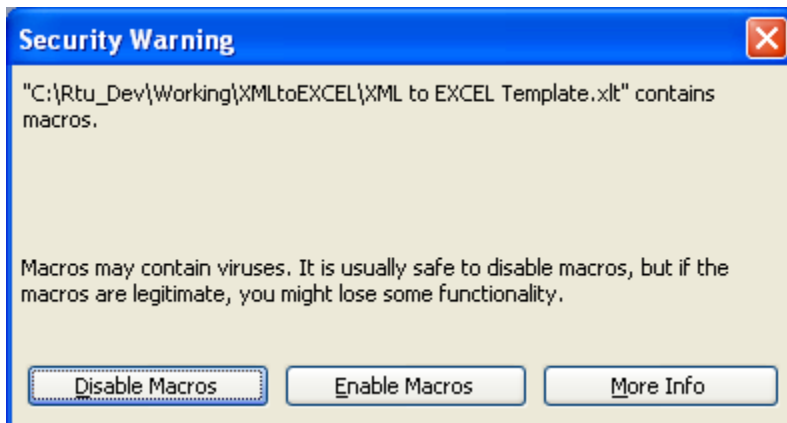
Release Notes

Notes:	
Version 5.6	Updated to work with 64 bit versions of Excel. Thanks to Michael Coletti for brining it to our attention.
Version 5.7	Added the following sources: JEM2ASCII, Calculations, Primary / Secondary IED, Breaker Timing App, C2020M IEDs, Battery Test App, MCD App, C3835 1ms SOE
	Added the Enhanced ModbusR Protocol to the supported Slave Protocols
	Added the Delete Sheets Button Below.
Version 5.8	Added DNPM IED's
	Added Boolean Status Points to the Translated Applications
Version 5.82	Reformatted DNPM IED's to use one sheet per Point Type
	Fixes for missing xml files in older configs
Version 5.83	Modified formatting for Port Settings Sheets.
Version 5.84	Added Comm Port Summary Sheet, Thanks to Steven Liter for feedback recent versions
Version 5.85	Changed the DNPM Port config screens to include Port Settings, IED Settings, and IED Points
Version 5.86	Sheet names can't have special characters

Getting Started

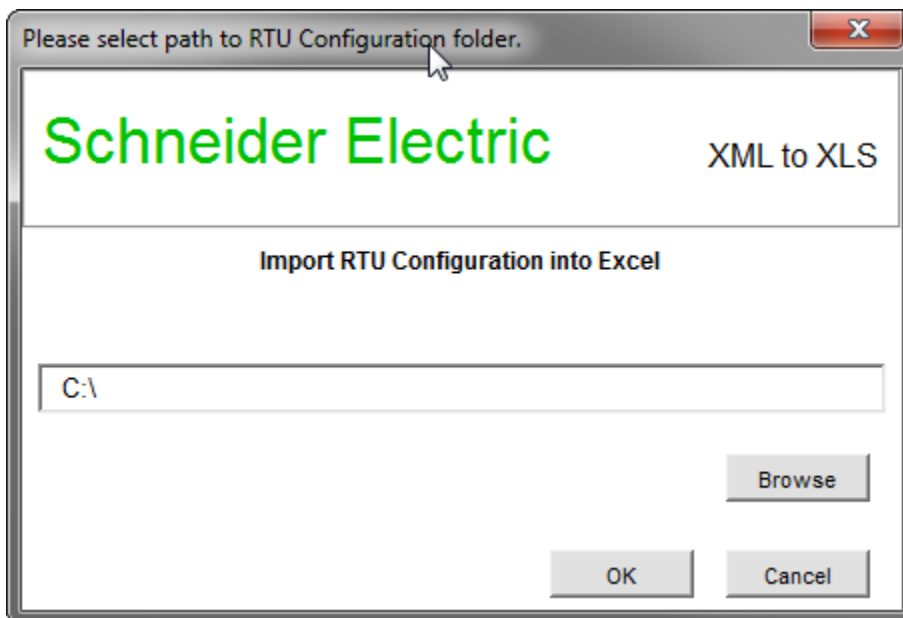
Start Excel. Ensure that the Security settings allow for macros to run, Tools->Macro->Security. The setting should be medium or low. If it is set to High or Very High the program may not function.

Open the "XML to XLS_xy_n.n.xlt" file. Where *xy* is the firmware version (e.g. C2, D0, etc.) and *n.n* is the revision level (e.g. 2.6, 2.7, etc.). If your Security setting is set to Medium then you should see the following pop-up:



Select Enable Macros to continue.

The following program pop-up will appear. If it does not, press "Ctrl+r" to start program.



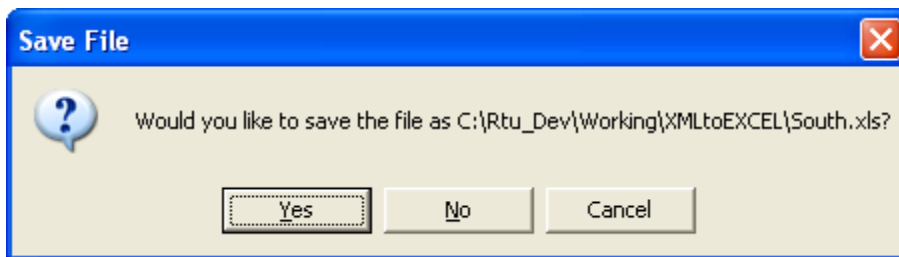
Click Browse and navigate to the folder which contains the configuration files (XML). Then click OK to run the program.

If there are any errors with the program they should display on the Info sheet. Note, in order for the program to function correctly any Fatal errors must be resolved and the Info sheet deleted before trying to run the program again.

Once the program is finished you can easily print each sheet without having to set the headers and page print margins by selecting the sheet you want to print and go to File->Print. The program automatically sets the page parameters for printing.

Saving the Output

Select File->Close. You will be prompted to save the file. Note the file name is the RTU name.



If you click Yes the file will be saved in the path shown on the pop-up screen. If you select No, you will be prompted to navigate and save the file in the directory you choose and the file name you specify.

Or you can select File->SaveAs, name the file and path to save to.

Notes:

The program will only run once on a new spreadsheet. If you attempt to re-run the program with data sheets created, you will get an error. Save you current configuration and open the template.

You may also use the Delete Sheets button to remove sheets from previous program runs.

A printer must be configured on your PC in order for the program to function correctly.