

Telvent

[Config@WEB](#) RTU Firmware Update Instructions

| Rev. | Date | By | Comment |
|------|-------------|-----|--|
| 0.0 | 17-Jul-2003 | DGM | Created for A7 release. |
| 0.1 | 30-Jul-2003 | DGM | Revised for A8 release. |
| 0.2 | 09-Sep-2003 | DGM | Revised for A9 release. |
| 0.3 | 11-Dec-2003 | DGM | Revised for AA release. |
| 0.4 | 19-Dec-2003 | DGM | Revised to instruction the user to first archive the XML and to now enter Username and Password at the login screen. |
| 0.5 | 02-Sep-2004 | DGM | Revised to load GUI first to get good FTP Active X control. |
| 0.6 | 22-Feb-2005 | DGM | Revised for B0 release. |
| 0.7 | 28-Mar-2005 | DGM | Added Appendix A, Conversion Tool Overview, updated text font to Telvent standards. |
| 0.8 | 20-Jul-2005 | DGM | Revised for C1 release. |
| 0.9 | 02-Sep-2005 | DGM | Revised for C2 release. |
| 1.0 | 20-Oct-2005 | DGM | Revised for C3 release. |
| 2.0 | 28-May-2008 | BG | Revised for CD release |
| 2.1 | 15-Oct-2009 | KAB | Revised to first download and convert configuration before starting new uploads. |

WARNING: Although the Configuration Converter program will work with any configuration from S2200-500-001A5 through S2200-500-001B6 firmware, and older versions of C3413-500-001YZ firmware, the output is designed to be used only on the following RTUs only: SAGE 2300, SAGE 3030, SAGE 1310, SAGE 1330, SAGE 1350 and SAGE 3303.

Note: You cannot convert a configuration from a newer version of firmware to an older version of firmware.

Overview

See the Appendix for an overview and quick instructions for the experienced user.

Description of Firmware Numbering System

The files required to update an RTU's firmware are located in a zip file. The file name is based on the firmware numbering system. The zip file is named either:

"C3413-500-XXXYZ_Update_Files.zip" for a release.

"C3413-500-XXXYZ_PN_Update_Files.zip" for a patch to the release.

The XXX field in the file name is the firmware number. Baseline firmware is number "001" while special firmware for a customer will have a number other than "001".

The Y field is the version number which started at A and will change by one letter for a new base release (XXXY0 release). Version C3413-500-001D0 firmware will be newer than C3413-500-001C2 or any patch of version of C3413-500-001C2 firmware. A version number change occurs when any major function is added to the baseline firmware.

The Z field is the step of the version which starts at 0 and increases by 1 for new release until a new version number release is done. The firmware named C3413-500-001D2 is newer than C3413-500-001D1 firmware. A change in any of the configuration (XML) files used by the RTU forces a new step number to be created.

If a patch release is done, N is the patch number. C3413-500-001D2_P2 firmware is newer than C3413-500-001D2_P1 firmware. Patches use the

same version configuration as the base version number release. Changes to the Application or the GUI force a new patch.

Description of Zip File, Folders and Types

When you extract a firmware update zip file, you will have a file structure as shown below regardless of where you extract the set.



The **Telvent** folder serves as the root of the update set.

The **SAGE2300** folder is used as the base folder for the update set. The update set can be used on any of the supported products, not just the SAGE 2300.

The **D3_P4Update** folder contains the rest of the folders associated with this set of firmware, in this case, C3413-500-001D3_P4.

The **GUI** is a series of HTML (HyperText Markup Language) and other files that are used to give the RTU the graphical user interface that appears in Internet Explorer. These files must always be the first loaded into an RTU whenever the firmware is updated or restored. There are 3 files in the GUI folder, the compressed GUI file with a name of the firmware release number with an extension of ".gui", index.htm and profileC.xml

The **Application** is the actual firmware that runs the RTU. This is a binary file (has extension .out) and has the name C3413-500-XXXYZ, where XXX is the firmware number, Y is the version number and Z is the step of the version. Usually the firmware number will be 001. There is one file in the Application folder, the firmware release number with an extension of ".out".

The **Configuration** folder contains the following two folders, XML and Template described below.

The **XML** folder holds a series of XML (extensible markup language) files that contain all the port, hardware, and other configurations of the RTU. Whenever you configure an RTU and wish to save the configuration for future reference, these are the files you would "Get from RTU". Before a firmware update you should "Get" these files and store them in a known location to use with the configuration conversion program. During an update to a new revision of firmware you will need to run these configuration files through the Convert_to_*nn* program to ensure compatibility with the new Application and GUI files. The number of files varies from version number to version number, but all files have an extension of ".xml" and should never be 0 bytes in length. You can view these files in Internet Explorer by launching the file with Windows Explorer. If Internet Explorer presents any type of error, the content of the file is invalid and will not be usable by the RTU firmware.

The **Template** files are XML files that are created in the RTU that are used as a basis for common configuration parameters. The latest Convert_to_*nn* program includes an option to also convert template files. The Template(s) must be run through the conversion program separately from the configuration. This folder may contain only a "tpl.txt" file or if you have created templates, files with the extension ".xml". The template files can be viewed as a configuration file above.

The **Operating System** is the VxWorks program which manages the firmware on the RTU. There will be only one file in this folder, "vxworks".

The **CfgConverter** folder contains the conversion converter program that will take an existing configuration that is loaded onto the PC from the RTU and update it to run with the version of firmware that matches the name of the converter program. It may have to add tags to existing configuration files or add completely new files to the configuration to match the new firmware set. Existing configuration files may be run through the converter program multiple times. This document is also contained in the folder.

The **ConfigToExcel** folder contains two files, the Excel macro to convert the XML file configuration to an Excel spreadsheet and the documentation file that contains the directions on how to perform this task.

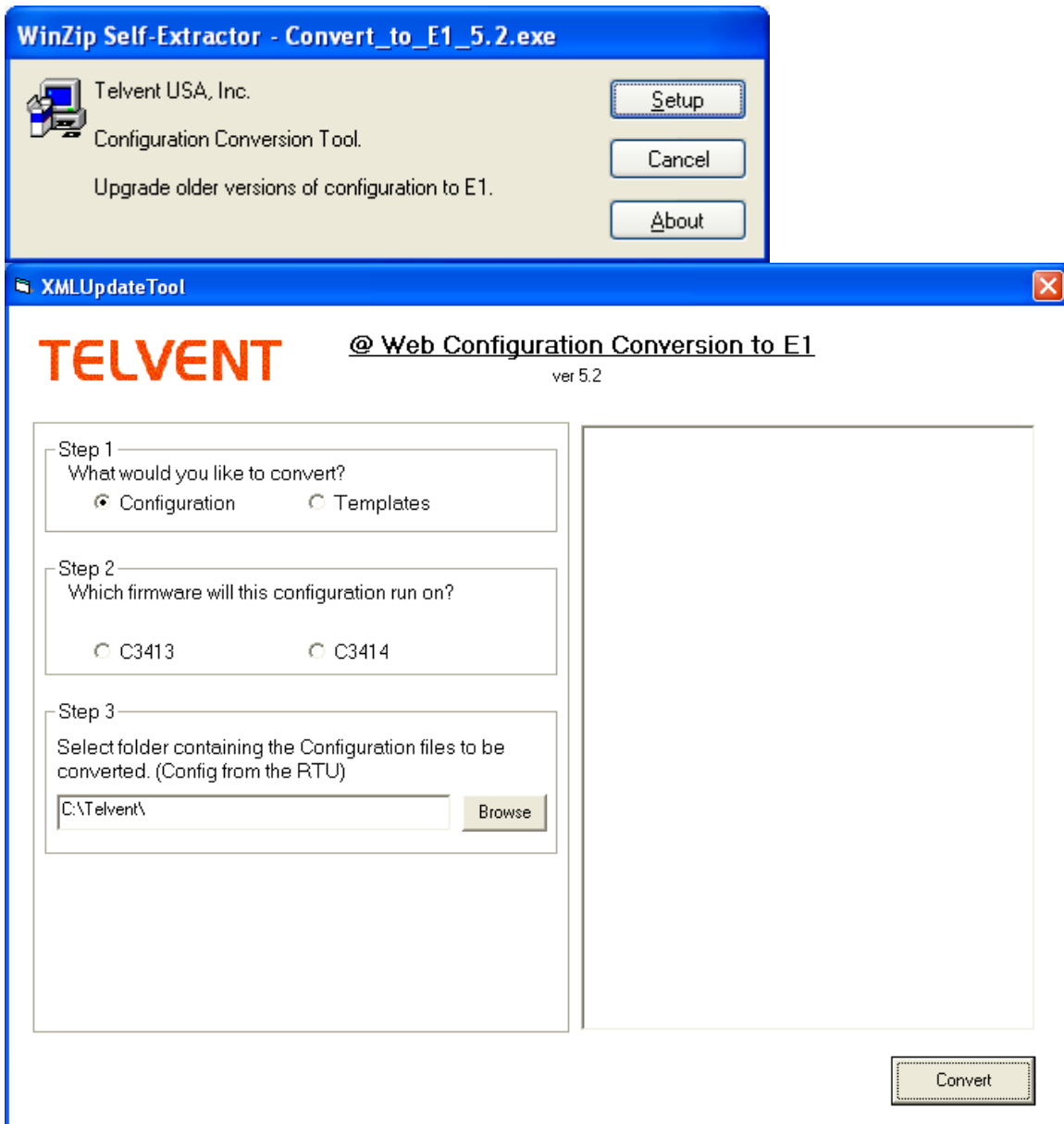
Step by Step Instructions:

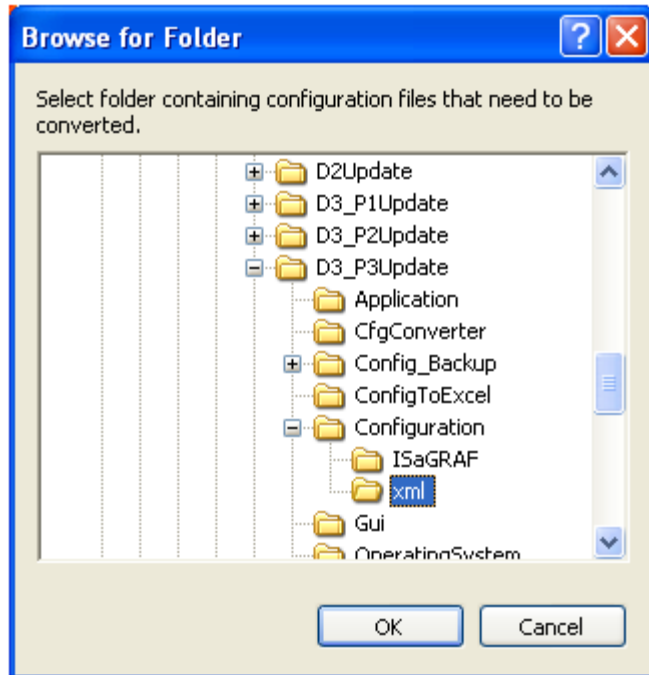
Note that the files may be "unzipped" anywhere by the user, but the following instructions assume the file is unzipped into the C:\ folder and that the firmware to be installed is not a patch.

1. Unzip (extract) all files into root (C:\) directory. Ensure to select "Use folder names", this will create a path as follows:
C:\Telvent\SAGE2300\YZUpdate, where "Y" is the version of update and Z is the step. A patch will create a path of the form
C:\Telvent\SAGE2300\YZ_PNUpdate.
2. Connect the RTU to PC via cross-over Ethernet cable or via in-house LAN connection (whichever is appropriate for RTU Ethernet connectivity)
3. Open Internet Explorer and type in the IP address of the RTU in the "Address" window.
4. When the RTU Logon screen appears, enter user name, password and click "Log In", then click the "Up/Download" tab on RTU user interface.
5. Select "Configuration" from the drop-down combo box labeled "File Type" on the RTU user interface.
6. Click on "Get" button. For this step allow the RTU to send the file to the default path it comes up with, which will be:
C:\Telvent\SAGE2300\rtuname\Configuration, where rtuname is whatever the RTU is named in the CPU setup screen. NOTE: For A5 firmware the path will be C:\Metso... instead of C:\Telvent... **Make a backup copy of this configuration directory for archival purposes.** If a pop-up window appears that reads "ISaGRAF Configuration, Operation Cancelled", just click "OK".
7. Run the RTU configuration conversion tool (see Appendix A). The tool is in the folder: C:\Telvent\SAGE2300\YZUpdate\CfgConverter. This step will allow the user to merge an existing configuration (RTU firmware revision A5 or greater) with the latest XML released configuration format. NOTE: The result of the conversion will overwrite your old configuration files with the new updated configuration

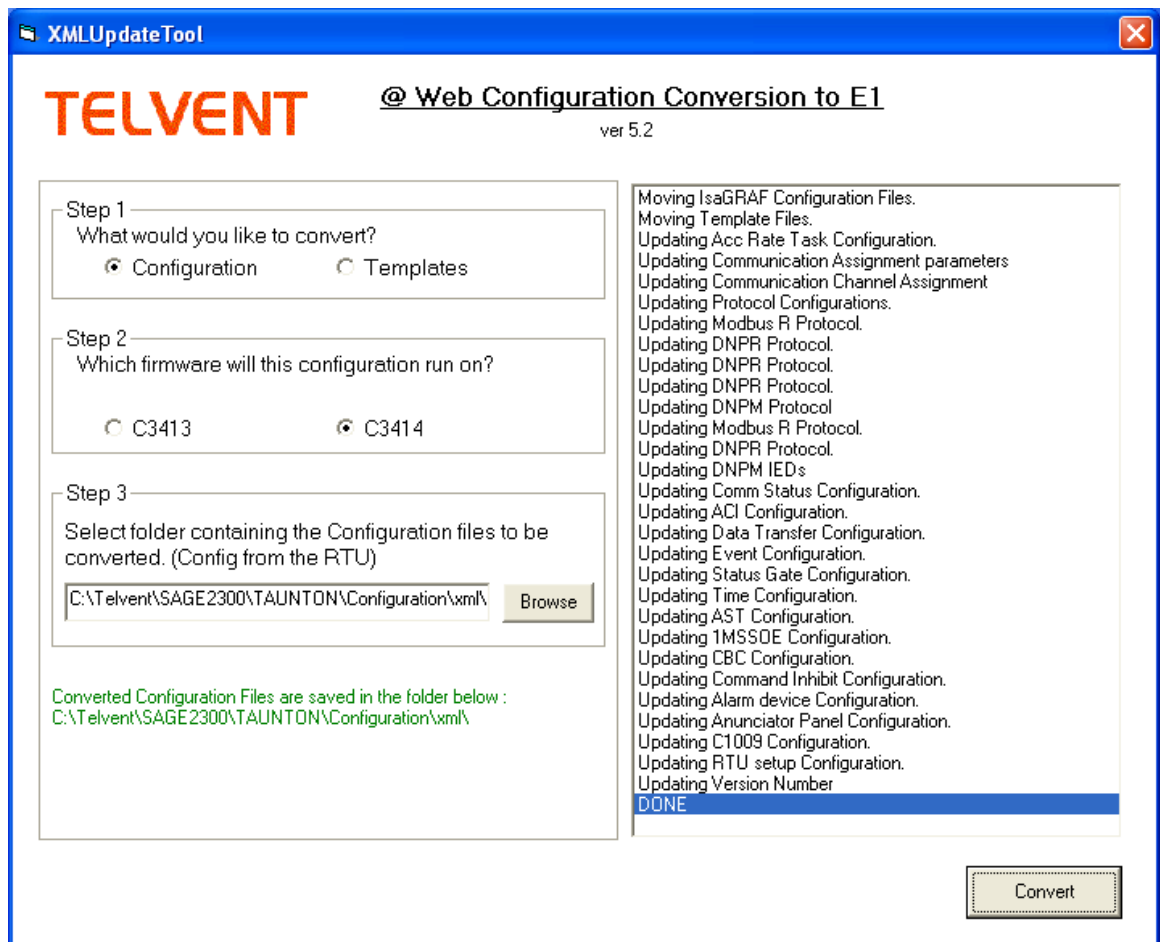
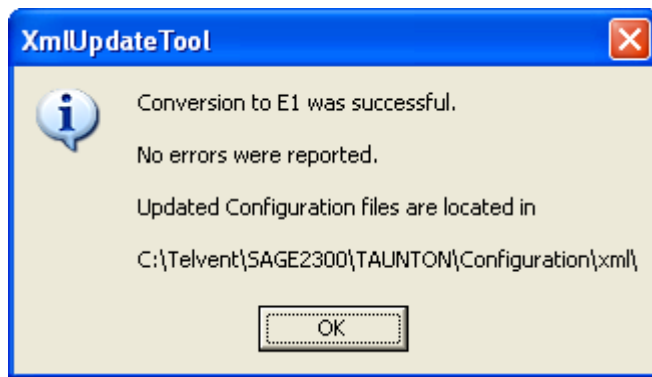
files. When the Conversion Tool is executed a similar window will appear.

8. The first window to appear will be the following splash screen: Click Setup to continue to the next screen, shown below.





9. In Step 1 within the figure above, select whether you want to convert Configuration files or Template files (you can come back and do the other when you finish with either type).
10. In Step 2 within the figure above, select which cpu firmware you want convert to.
11. In Step 3 within the figure above, type in the path, C:\Telvent\SAGE2300\YZ_PNUpdate\Configuration\xml or browse to the 'xml' folder, for the old configuration files, as shown above. The conversion program automatically creates a backup copy of the old configuration files.
12. To convert files, click the convert button. An example result is shown below.



13. Once the conversion is DONE, Select "GUI" from the drop-down combo box labeled "File Type" on the RTU user interface.
14. Click on "Send" button. You will get a pop-up file navigation screen. Navigate to C:\Telvent\SAGE2300\YZUpdate\GUI.
15. You will see a "C3413-500-XXXYZ.gui" file. Select this file. Click on "Open".

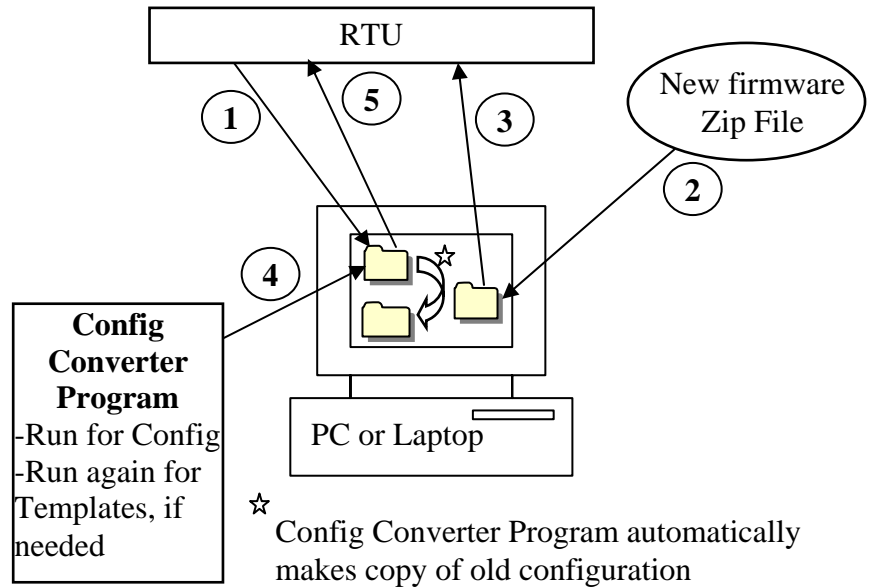
16. A dialogue box will pop up asking if you want to over-write the existing GUI files. Click "OK". The GUI is the largest portion of the RTU update and may therefore take several minutes.
17. When the "Result" window shows "OK", refresh the Up/Download page by pressing the F5 key. This will allow the new FTP control to load.
18. Select "Application" from the drop-down combo box labeled "File Type" on the GUI.
19. Click on "Send" button. You will get a pop-up file navigation screen. Navigate to "C:\Telvent\SAGE2300\YZUpdate\Application\C3413-500-XXXYZ.out".
20. Click on that file to highlight it and click on "Open".
21. A dialogue box will pop up asking if you want to over-write the existing application. Click "OK". The transfer should take under 30 seconds.
22. Now use the "Up/Download" feature to 'Send' the converted configuration back to the RTU. Note: The directory to be selected should be the default one containing the current RTU configuration files that were originally downloaded from the RTU in step 6. This directory now contains the modified files after the conversion.
23. Ensure "Configuration" is visible on drop-down combo box labeled "File Type" on RTU user interface.
24. Click on "Send" button. You will get a pop-up file navigation screen. Navigate to C:\Telvent\SAGE2300\rtuname\Configuration\xml, where rtuname is whatever the RTU is named in the CPU setup screen.
25. Click on "Open".
26. A dialogue box will pop up asking if you want to replace the existing xml files. Click "OK".
27. Repeat steps 17 -20 for sending the "Operating System" and "Template" file(s). Navigate to the appropriate directory in step 21 (i.e. Operating System/ Templates).
28. Press "Reset" button and confirm you wish to reset when the pop-up dialogue box asks. The RTU will reset in about 60 seconds.

29. The RTU is now updated with the newer firmware and should still be configured as it was before the update process.

Appendix A

Configuration Upgrade Quick Instructions

1. GET Config (and/or Templates) from RTU to PC
2. Unzip new firmware to PC
3. Run Config Converter program on items from step 1 (see details below)
4. SEND new firmware GUI and Application to RTU
5. SEND Config (and/or templates) to RTU



End of File