



**Running ISaGRAF 4.20B on Windows 7 Professional 64-bit
Version**

SAGE RTU Family

Version 1.4

18-Oct-2013

Rev.	Date	By	Comment
1.0	15-Jul-2013	DJS	Created
1.1	16-Jul-2013	DJS	Added reason for having to use Version 4
1.2	22-Jul-2013	DJS	Users Security requirements to ISaGRAF PRO folder
1.3	25-Sep-2013	DJS	Change picture to ISaGRAF 4.20B
1.4	18-Oct-2013	DJS	Changes to Introduction

Introduction

The SAGE RTU currently does not support ISaGRAF 6 for firmware Versions S2200-500-XXXXYZ, C3413-500-XXXXYZ, C3414-500-XXXXYZ.

ISaGRAF has changed their model for how their product is licensed and used for this version of their product.

With the ISaGRAF version 4 currently installed in the SAGE RTU product, the ISaGRAF runtime code is distributed free of charge and the ISaGRAF programming software is protected with a hardware or software security device and a license is required.

In ISaGRAF 6, the licensed runtime code is protected by security software running in the target device and the ISaGRAF programming software is distributed free of charge.

ISaGRAF is working on a change to their Version 6 product to encrypt the network traffic between the PC running the programming software and the target being used to run the application developed in the ISaGRAF programming software.

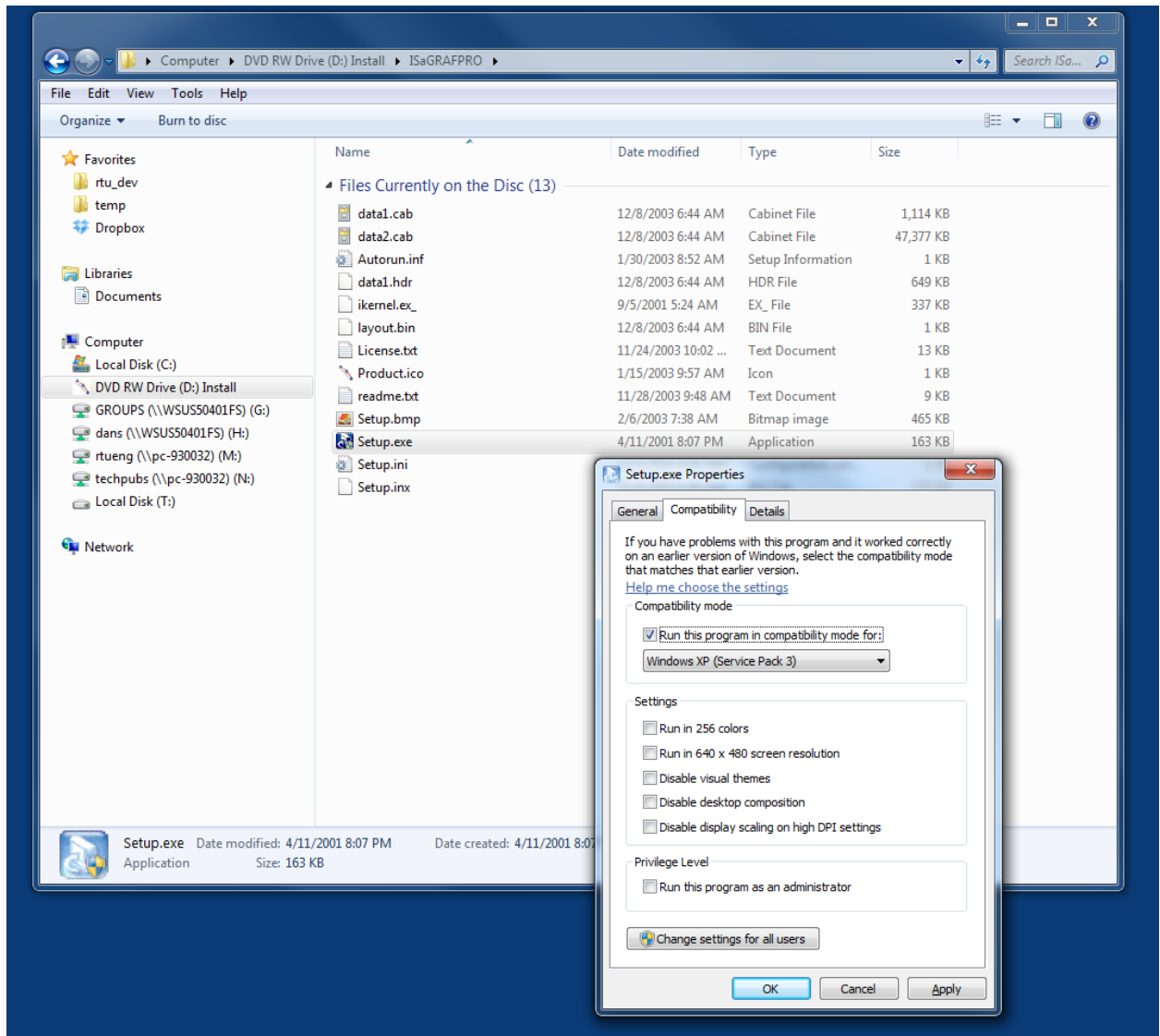
Once ISaGRAF has this completed and released this change, the new secure firmware C3414-500-S02YZ, compatible with the C3414 CPU card used in the SAGE 2400/3030M/14X0 RTUs will be changed so that there will be some mechanism to validate that the ISaGRAF product has been licensed for the CPU card that it is being used in the RTU.

This change will not be retrofitted back into the older software sets (S2200-500-XXXXYZ used on SAGE 2200/12X0 RTUs, C3413-500-XXXXYZ used on SAGE 2300/3030/13X0 RTUs, C3414-500-XXXXYZ used on SAGE 2400/3030M/14X0 RTUs), so the old Version 4 programming software will have to be used to work with these sets of firmware.

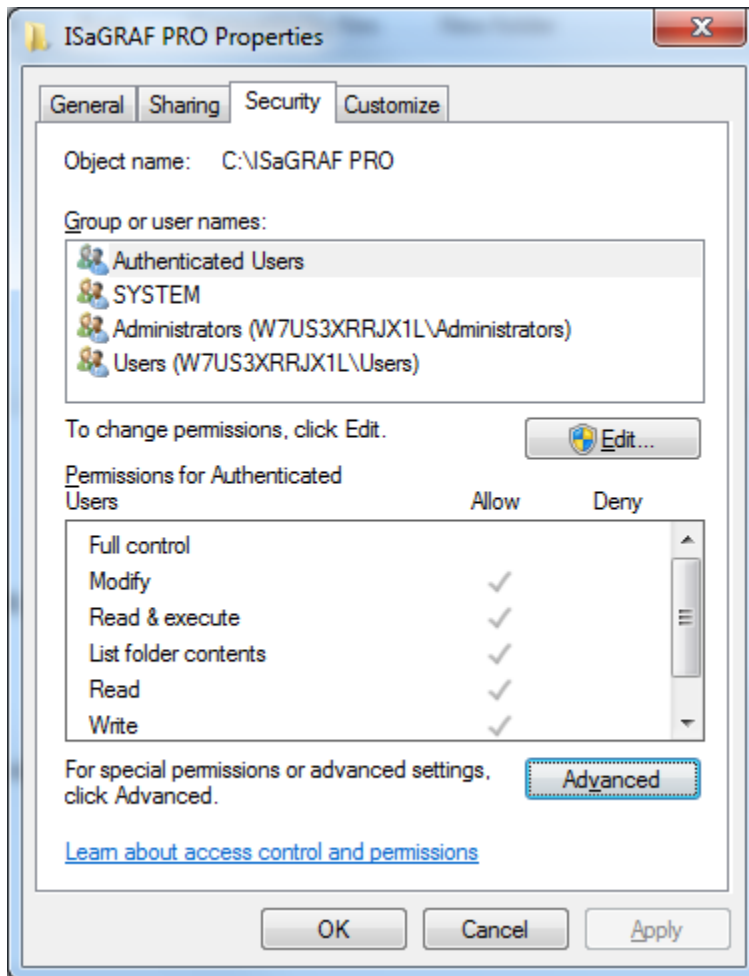
Installation

The following are the directions for installing ISaGRAF 4.20B or ISaGRAF PRO software on Windows 7 Professional 64-bit Version.

- 1) Load the ISaGRAF 4.20B installation CD. If it auto launches, terminate the installation at the first available opportunity.
- 2) Using Windows Explorer, locate the "Setup.exe" file, right click, select "Properties", then "Compatibility". Then click the "Run this program in compatibility mode for:" Windows XP (Service Pack 3), then "OK".



- 3) Launch "Setup.exe" and allow the program to install. You will get at least two errors, warning about incompatible 16 bit program and failure of the Rainbow Sentinel driver to install.
- 4) Go to the following web site to get the updated driver for Rainbow Sentinel.
<http://www.rainbow.com.my/support.php?id=1>
- 5) Once on the site, "Download Driver" (Version 7.6.6 as this document is written) for the product.
- 6) Once the download completes, install the driver.
- 7) Find the installation CD for the SAGE RTU version of the ISaGRAF product and follow the instructions to move the "config_web_rll" folder into the ISaGRAF "Tpl" folder.
- 8) Make sure that the security settings for the ISaGRAF Pro folder and sub folders allow the Users of the PC to Modify, Read & execute, List folder contents, Read, and Write files in the folders.



This completes the installation of the ISaGRAF product.